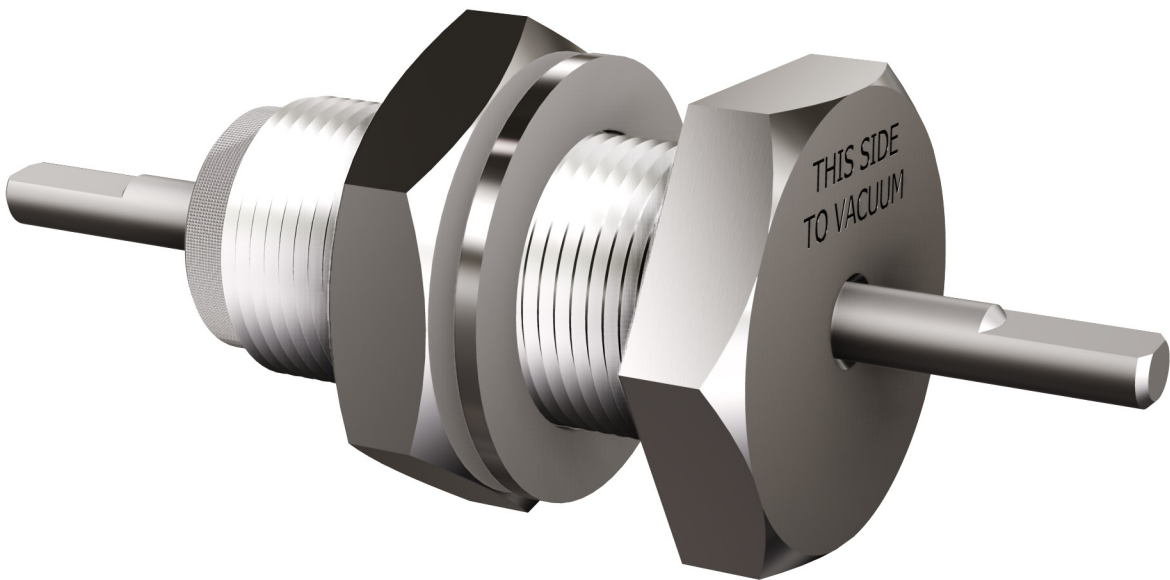
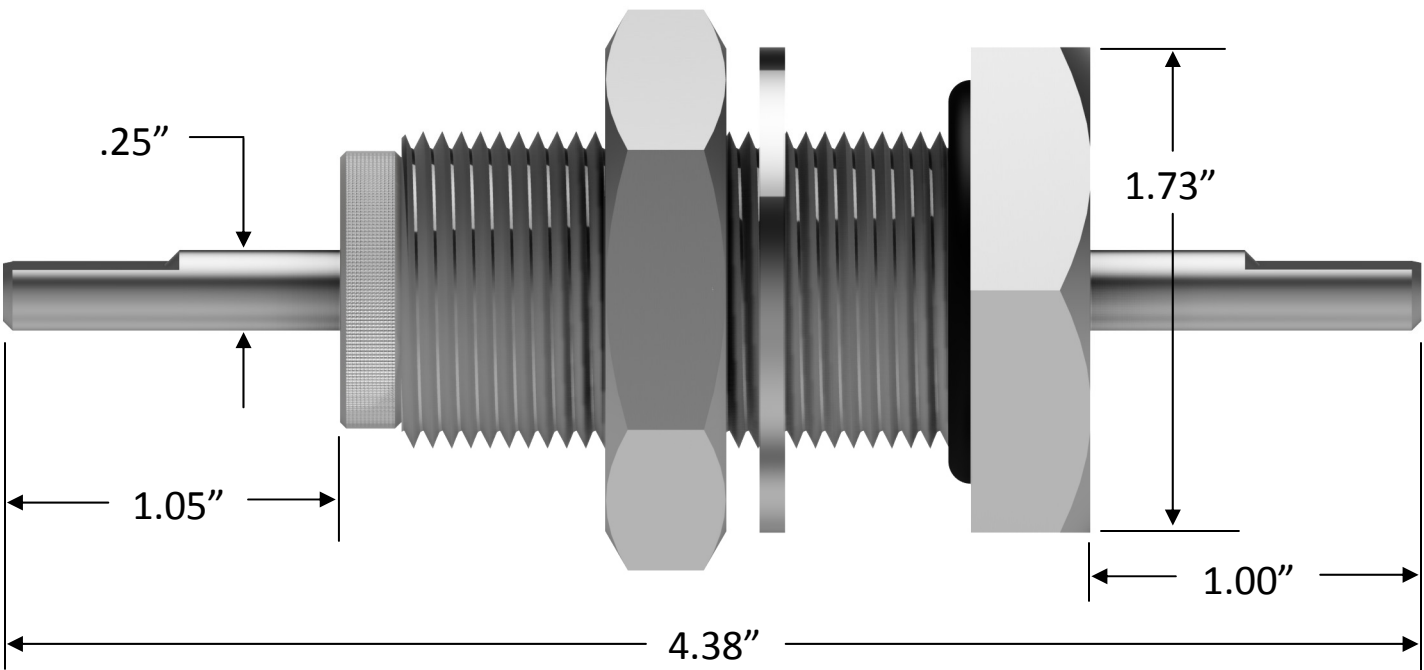


SPECIFICATIONS: For standard 1" baseplate through hole mounting, constructed of 304 stainless steel and sealed with a pre-loaded Viton® O-ring. Provided with a 1/4" shaft supported by two ball bearings for smooth operation, it is designed for either manual or motorized applications at speeds up to 500 rpm and maximum torque of 1600 oz./in.

THIS DRAWING IS THE PROPERTY OF HUNTINGTON MECHANICAL LABS, INC., AND IS PROPRIETARY IN GENERAL AND IN DETAIL. IT SHALL NOT BE MODIFIED IN ANY WAY. PERMISSION IS GIVEN TO PRINT AND DISSEMINATE FREELY.




Dimensions: inches (mm)

DIRECT DRIVE ROTARY BASEPLATE FEEDTHROUGH

DESCRIPTION	WEIGHT (lbs.)	PART NUMBER
DIRECT DRIVE ROTARY BASEPLATE FEEDTHROUGH	0.75	BP-20

Other stroke lengths & flange options available. For quotes, please call 800-227-8059 or visit our website at www.huntvac.com. Email: vacman@huntvac.com

 Huntington Mechanical Labs, Inc.		13355 NEVADA CITY AVENUE GRASS VALLEY, CA. 95945	
FEEDTHRU, ROTARY DRIVE BASEPLATE MOUNT			
B	DWG. NO.	BP-20 OUTLINE	REV. -
SCALE: NO SCALE		SHEET: 1	OF 1